

swemake

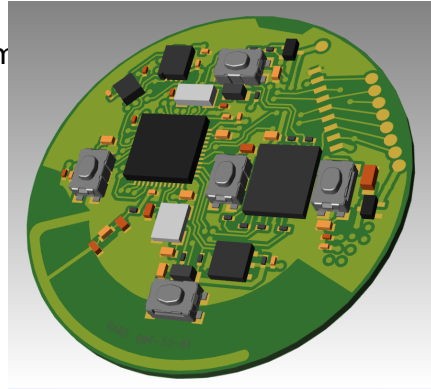
Preliminary

SWE0001-1 PRODUCT SHEET

GENERAL DESCRIPTION

SWE0001-1 is a Bluetooth Low Energy platform that may serve many purposes depending on platform variant.

It may be equipped with an accelerometer and a gyro from world leading supplier Bosch Sensortech, allowing low power, low noise 16 bit inertial measurements for a wide range of applications.



In addition, the platform may be used as a high precision temperature sensor and as a logging device.

It can also act as a low cost BLE proximity beacon that advertises ID data compatible with common beacon standards: UUID, Major ID and Minor ID). The BLE-chip is supplied by Nordic Semiconductor and has a Cortex M4 host CPU.

Up to five buttons may be configured, allowing for a flexible user interface.

The firmware can with ease be customized to fit customer requirements as well as access additional sensors and platforms through the serial connector, and can be delivered with custom casing and in any quantities.

SWE0001-1 is certified according to CE and FCC regulations and comply with ROHS2.

FEATURES

- PCB size: 33mm in diameter.
- Thickness: 10mm with battery holder.
- -20°C to +60°C operating range.
- 30mm x 30mm x 10mm.
- CR2450 3V battery, replaceable.
- Up to five push buttons with LED indicators.
- Gyro – 16bit resolution, up to $\pm 2000^\circ/s$ range, bandwidth 1600Hz.
- Accelerometer– 16bit resolution, up to $\pm 16g$ range, bandwidth 1600Hz.
- Sensor data timestamping.
- Temperature measurement down to $\pm 0.10^\circ C$.
- External interface – external 3.3V, 2xGPIO and I2C.



swemake

Preliminary

SWE0001-1 PRODUCT SHEET

APPLICATIONS

- Augmented reality
- Indoor navigation
- Gesture recognition
- Pedometer
- Free-fall detection
- Activity monitoring
- Action triggers
- Control device
- Location beacon
- Sensor module

VERSIONS

In addition to the below list of standard versions, it is possible to configure custom combinations. Please contact Swemake or Swemakes distributor Acal BFi for details.

VERSION	BUTTONS	BLE	ACCELEROMETER	GYRO	LARGE FLASH	TEMPERATURE	EXTERNAL CONNECTOR
SWE0001-01	1	•				±2°C	
SWE0001-02	5	•				±2°C	
SWE0001-03	5	•	•			±2°C	
SWE0001-04	5	•	•	•		±2°C	
SWE0001-05	5	•	•	•	•	±2°C	
SWE0001-06	5	•	•	•	•	±0.50°C	
SWE0001-07	5	•	•	•	•	±0.50°C	•

CONTACT INFORMATION

Swemake AB

+46 (0) 46 192700
info@swemake.com

Box 1233
22105 Lund
Sweden

Acal Bfi

+46 (0) 8 5465 6500
info@acalbfi.se

PO Box 3002
750 03 Uppsala
Sweden